

PART OF THE NE.1/4, OF SEC. 29, T.7N., R.1E., S.L.B. & M.

ANNDEE SUBDIVISION

IN WBER COUNTY
SCALE 1" = 50'

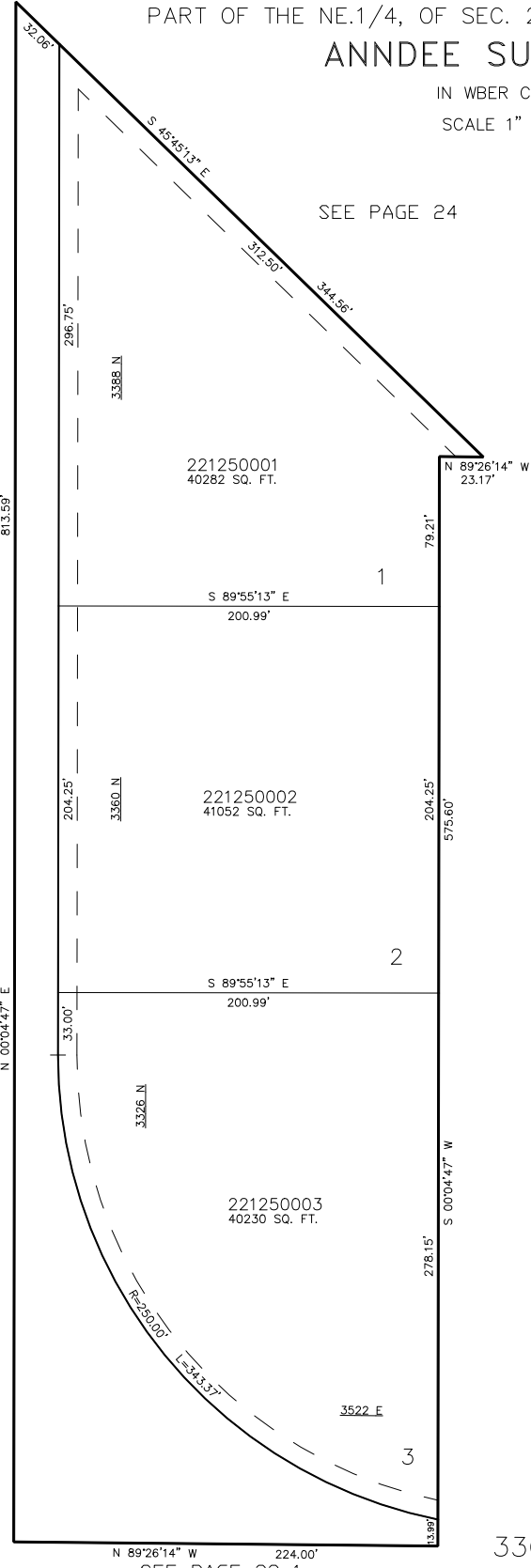
TAXING UNIT: 36

SEE PAGE 24

3 5 0 0 E A S T S T R E E T

SEE PAGE 23-1

SEE PAGE 23-1



FOR COMPLETE ENG DATA SEE
ORIGINAL DEDICATION PLAT IN
BOOK 41, PAGE 15 OF RECORDS.

10' UTILITY & DRAINAGE EASEMENTS EACH
SIDE OF PROPERTY LINES AS INDICATED
BY DASHED LINES EXCEPT AS OTHERWISE
SHOWN.

SEE PAGE 23-1

3300 NORTH STREET